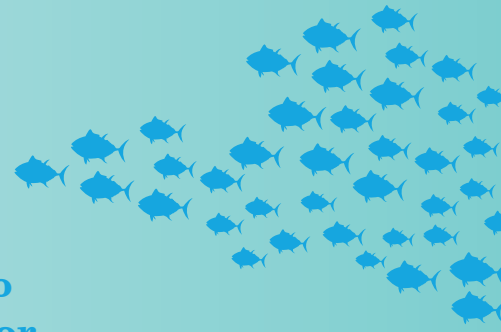


EASTERN CAPE YORK WATER QUALITY PROGRAM



The Eastern Cape York Water Quality Program aims to address actual and emerging threats to maintain and/or improve the quality of water entering the Reef from less-disturbed catchments

Cape York Peninsula's waters have more than 40% of the coral reef area and more than 30% of the seagrass coverage for the entire Great Barrier Reef. The region has maintained strong natural and cultural values, but climate change and increasing local stressors, such as water quality, threaten the peninsula's Reef ecosystems.

Through the 3.5-year, \$8.7 million Eastern Cape York Water Quality Program, local partners will continue taking meaningful action to protect the Great Barrier Reef through direct intervention and conservation efforts, critical research, and monitoring.

The program and all its projects are managed collaboratively by local community-based organisations and Traditional Owners, whose country-specific activities are an integral component.

Integrated Fire Management

Working with Traditional Owners, landowners and leaseholders, this project aims to increase ground cover across 65,000 hectares through strategic and coordinated fire planning and management approaches building capacity in the region.



Gully Erosion Control

This project is reducing gully erosion in the highest priority gullies in the Annan River catchment contributing to the 10% anthropogenic sediment load reduction target for the Annan River.

Erosion Control on Council Roads

In partnership with Cook Shire Council, this project aims to develop and demonstrate practical and implementable best management practices for road construction and maintenance for the reduction of soil erosion along unsealed Council Road sites known to be chronic sources of fine sediment delivered to the Great Barrier Reef Lagoon.

PROJECTS

Fire Management & Primitive Erosion Control



This project is tackling all significant sources of sediment on 46,000 hectares through erosion control on tracks and gullies, and strategic fire management to reduce the amount of bare ground at the start of the wet season.

Traditional Fire and Land Management

Supported by their elders, Yuku Baja Muliku Rangers are mapping, assessing, and controlling erosion along roads, tracks, fire breaks, and fence lines. Erosion control pilot projects will include known road/tracks where sediment is delivered directly to local fringing reefs.



Integrated WQ Monitoring

This project is assessing the condition of critical coastal wetlands and seagrass meadows, collecting data from eastern Cape York rivers to define baseline conditions, establishing local water quality improvement objectives, and calculating sediment loads delivered to the Reef.



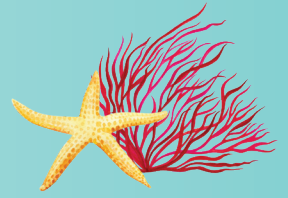
Erosion Control on Primitive Roads and Tracks

This project is mapping and assessing erosion along primitive roads, tracking and fence lines, and establishing erosion control demonstration sites. Best Management Practices for primitive road and track maintenance to reduce erosion will be developed in collaboration with local landowners and land managers.



The Eastern Cape York Water Quality Program is funded by the partnership between the Australian Government's Reef Trust and the Great Barrier Reef Foundation.

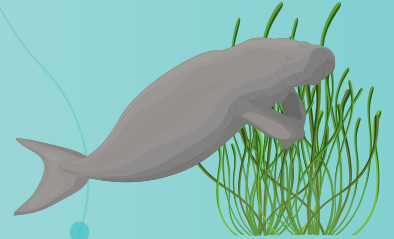
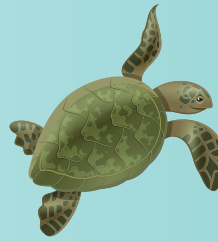
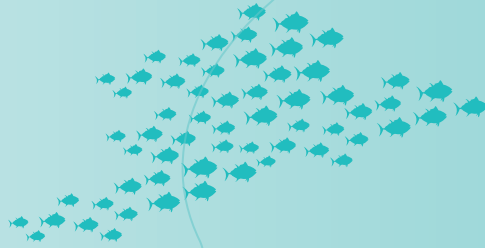
EASTERN CAPE YORK WATER QUALITY PROGRAM



The Cape York region includes 43,000 square kilometres of catchments that drain eastwards into the Great Barrier Reef



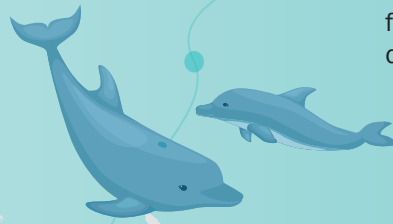
The region contains some exceptional conservation assets, including relatively intact and extensive coastal dune fields, wetlands, rainforest, heathlands and river systems



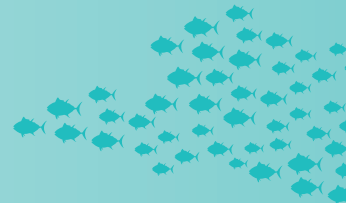
The region supports high levels of biodiversity found nowhere else in Australia. Its seagrass meadows support local commercial and recreational fisheries and provide food for marine turtles and dugongs



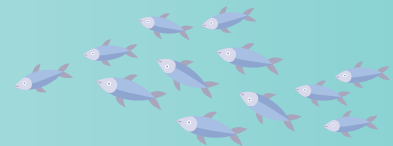
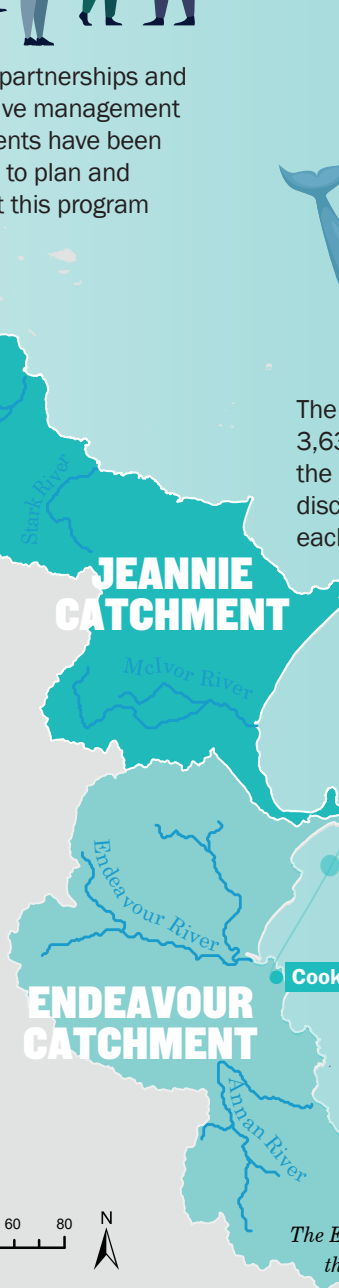
New local partnerships and collaborative management arrangements have been developed to plan and implement this program



The Jeannie catchment covers 3,638 square kilometres, 8% of the Cape York region, and its rivers discharge about 1,432 gigitalitres each year to the coast



Increased erosion in catchments due to clearing, grazing, road works or other earthworks can result in increased turbidity in adjacent streams



The Endeavour catchment covers 2,182 square kilometres and its rivers discharge about 1,534 gigitalitres each year to the coast



Great Barrier Reef Foundation

The Eastern Cape York Water Quality Program is funded by the partnership between the Australian Government's Reef Trust and the Great Barrier Reef Foundation.